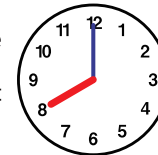


Waste and Recyclables How to sort and dispose

There is a specified method to separate and dispose of garbage and recyclables as well as the disposal day for each type of waste.
Refer to the garbage collection day (garbage disposal day) for your area on p.2-3 and note it down.

Put the garbage in a transparent plastic bag with its contents visible.



Dispose of garbage and recyclables at the collection point on the designated collection day before 8 a.m.

How to dispose of

Burnable waste

Twice a week

Day

Day

Dispose of before 8 a.m.

Food waste, clothing, rubber and leather products, etc.



Diapers • pet sheets



Paper bags that cannot be recycled



Plastic containers and packaging with stains that cannot be removed



Plastic and vinyl products



Put the garbage in a transparent plastic bag with its contents visible.



Wrap sharp objects with paper

Non-burnable waste

Twice a month

Week

Week

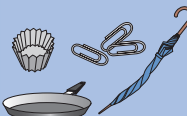
Day

Dispose of before 8 a.m.

Glass, ceramics, cutlery



Metal



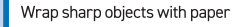
Electric appliances up to 30 cm



Put the garbage in a transparent plastic bag with its contents visible.



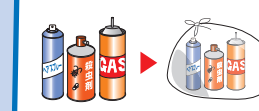
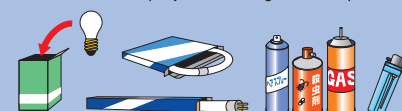
Wrap sharp objects with paper



Dry cell batteries



Fluorescent tubes, spray cans, and lighters in separate bags



Separate bags for each type

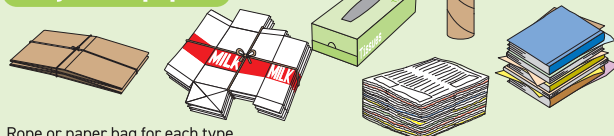
Recyclable papers • PET bottles

Once a week

Day

Dispose of before 8 a.m.

Recyclable papers

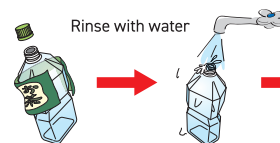


Rope or paper bag for each type

PET bottles



Remove caps and labels, and take them out as Plastic containers and packaging.



Crush

Newspapers

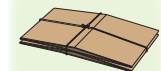


Milk cartons



洗って置いてリサイクル

Cardboard



Other paper products



Glass bottles • Cans • Plastic containers and packaging (containers made from plastic)

Once a week

Day

Dispose of before 8 a.m.

Glass bottles



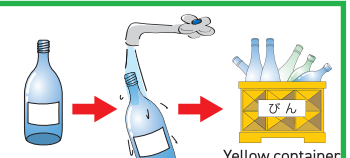
Cans



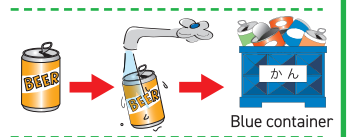
Plastic



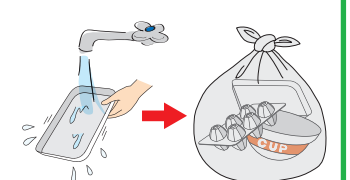
Rinse lightly before throwing out.



Yellow container



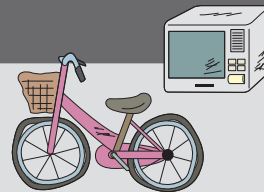
Blue container



Rinse with water

Bulky(Oversized) waste(requires fee and advance application)

Bulky waste size estimate:Oversized garbage such as furniture and electric appliances whose longest side is 30 cm or over and under 220cm



Applications **Bulky Waste Reception Center**

TEL

03-5296-5300

8:00 AM to 7:00 PM (Except from December 29 - January 3)

You may speak in English, Chinese, Korean, Portuguese, Spanish, Thai, and Vietnamese.

Online

<https://ecolife.e-tumo.jp/kankyo-suginami-tokyo-u/>
(available 24 hours a day) (Available in English, Chinese, and Korean)



FAX

03-6880-5852 (available 24 hours a day)

How to dispose of bulky waste

- 1 Measure the size of the item you wish to throw away and make notes.
- 2 Contact and apply to the Bulky Waste Reception Center.
- 3 Purchase an oversized waste disposal ticket office, convenience store, or supermarket in Suginami City. Write down the date (day of disposal), reception number or name.
- 4 Put the item out in front of your house or building by 8:00 AM on the designated date.

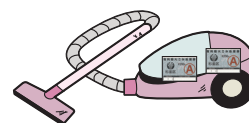
Samples



¥200 ticket



¥300 ticket



Not collected by the City of Suginami

Air conditioners /refrigerators (or freezers) /television sets /washers /dryers

Applications

The retailer where you purchased or replaced the product,
or the Home Appliance Recycling Reception Center

Household appliance recycling reception center

TEL **0570-087200** (Navi dial) Lines open: 9am-5pm (Monday-Friday) (in Japanese)

Online **<https://kaden23rc.jp>**



• A recycling fee and transportation fee will be charged when collecting these items.

PC

Applications

Recycling counter for each manufacturer or the PC3R
Promotion Association

PC3R Promotion Association (for computers that are homemade or by a bankrupt manufacturer)

TEL **03-5282-7685** Lines open: 10am-5pm (Monday - Friday) (in Japanese)

Online **<https://www.pc3r.jp/>**



(PC recycling mark)

- Put out together with peripherals that came with the computer when you purchased it, such as mice • keyboards • speakers and cords.
- Peripherals such as printers and scanners are non-burnable waste (items over 30 cm are bulky waste).

Other (hazardous or dangerous waste)

Contact a specialized processing company, Suginami Waste Disposal Office, Suginami Waste Disposal Office Honan Branch, or Waste Reduction Office (see p.20).

